

Wheatley, HP600-AL (543Q-7L), Quintuplex, Plunger Pump

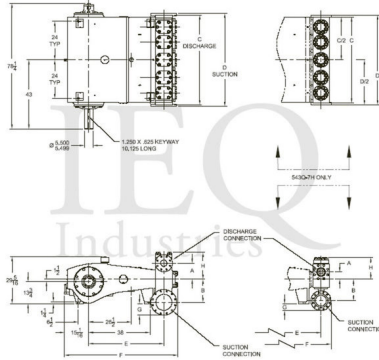
Pumps in this series

- [HP600-AL \(543Q-7L\)](#)
- [HP600-AM \(543Q-7M\)](#)
- [HP600-H \(543Q-7H\)](#)
- [HP600-XL \(543Q-7XL\)](#)

- 543 horsepower 7 1/8" stroke horizontal quintuplex single acting plunger pump
- Available in two fluid end materials
- Pump speeds up to 280 RPM

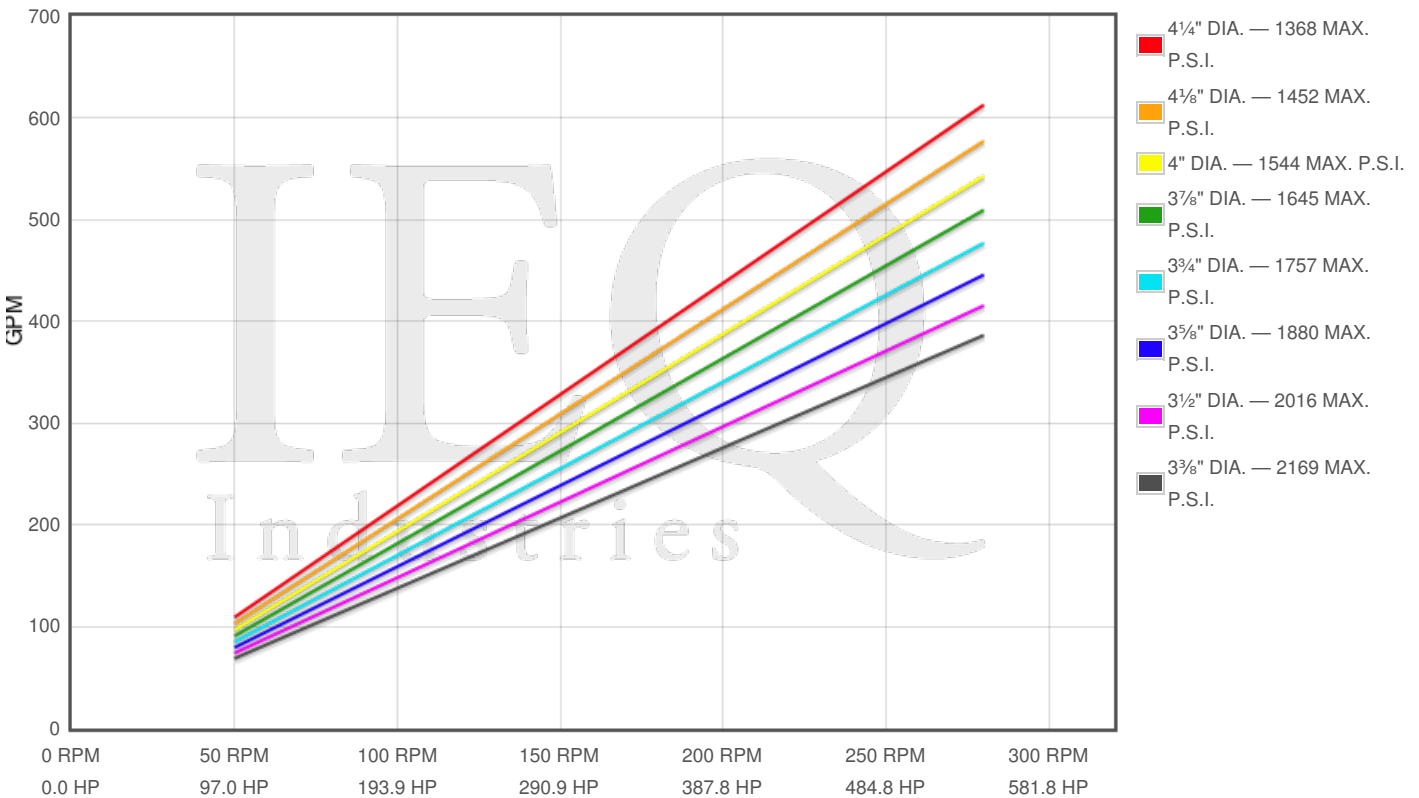
Specs

Spec	U.S. Standard
Type:	quintuplex
Minimum Plunger Diameter:	3 3/8"
Maximum Plunger Diameter:	4 1/4"
Stroke length:	7 1/8"
Maximum Working Pressure:	2,169 PSI
Rod/Piston Load:	19400lb
Gallons per Minute:	612.6
Barrels per Day:	21003
Brake Horse Power:	543.0



Pump Curves

Hover over Power Curves to reveal RPM and GPM



Performance Data Table

Pump	English Units					50 RPM		150 RPM		250 RPM		280 RPM	
	Plunger Dia. In.	Plunger Area Sq. In.	BPD per RPM	GPM per RPM	Max Press. PSI	BPD	GPM	BPD	GPM	BPD	GPM	BPD	GPM
HP600-AL 543Q-7L	4.250	14.1863	75.011	2.1878	1368	3751	109	11252	328	18753	547	21003	613
	4.125	13.3640	70.663	2.0610	1452	3533	103	10599	309	17666	515	19786	577
	4.000	12.5664	66.446	1.9380	1544	3322	97	9967	291	16611	484	18605	543
	3.875	11.7932	62.358	1.8188	1645	3118	91	9354	273	15589	455	17460	509
	3.750	11.0447	58.399	1.7033	1757	2920	85	8760	255	14600	426	16352	477
	3.625	10.3206	54.571	1.5917	1880	2729	80	8186	239	13643	398	15280	446
	3.500	9.6211	50.872	1.4838	2016	2544	74	7631	223	12718	371	14244	415
	3.375	8.9462	47.304	1.3797	2169	2365	69	7096	207	11826	345	13245	386

Features/Benefits

- Cast iron power frame
- Ductile Iron crankshaft
- Heavy-duty, tapered roller crankshaft bearings
- Precision type, aluminum alloy crankpin bearings
- Ductile iron connecting rods
- Roller Type Center Main Bearings
- Alloy steel crosshead pins
- Bronze bearing crosshead pin bushings
- Cast iron crossheads with upper/lower oil grooves
- Stainless steel extension rods
- Internal pressure lubrication
- Rated rod load is 19400 lbs.
- Bolted Type Valve Covers
- Removable Stuffing Boxes & Glands
- Plungers - Solid Ceramic, or Tungsten coated

Disclaimer I

This website is intended as a reference tool only. It has been constructed from published data that is based on manufacturer's sales and engineering documents that are either current, historical and obsolete. Much of the machinery data contained herein has been re-rated through the years with different engineering criteria which maybe in conflict with legacy data. Much of the content published here is calculated online with the use of dynamic data using formulas and extrapolations considered to be sound engineering formulas and are correct to the degree that the data used is accurate. We have done our best to be as precise as as possible in this posting but do not represent any of the calculations or performance data to be entirely accurate. The data published here is intended to be general information rather than actual and to serve as a reference rather than a technical absolute. The user of such data should confirm such information independently.

Copyright and Disclaimers

WheatleyGas.com is your resource for Gaso pumps, Gaso pump parts and a supplier of ORIGINAL GASO PARTS and equipment, new used and remanufactured Wheatley, GASO and Wheatley/GASO plunger and piston pumps and pump parts and is not affiliated with Wheatley/GASO Inc. or its parent company, National Oilwell Varco, p Copyright ©2017, IntelIQ Holdings, LLC. All rights reserved, *Used under license from IntelIQ Holdings, LLC.