

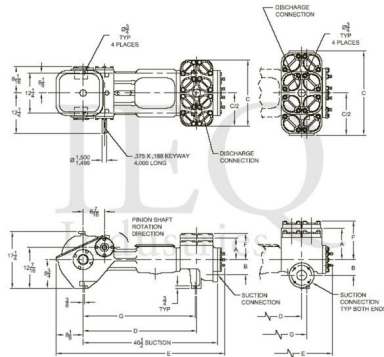
## Wheatley, 535, Duplex, Piston Pump (Mud Pump)

### Pumps in this series

- [535](#)
- [545](#)
- 12 horsepower 5.125" stroke continuous duty double acting duplex pump
- Rated at pump speeds up to 85 RPM
- Maximum discharge pressures up to 796 psi
- Equipped with cast iron fluid ends
- Equipped with internal gear reduction unit

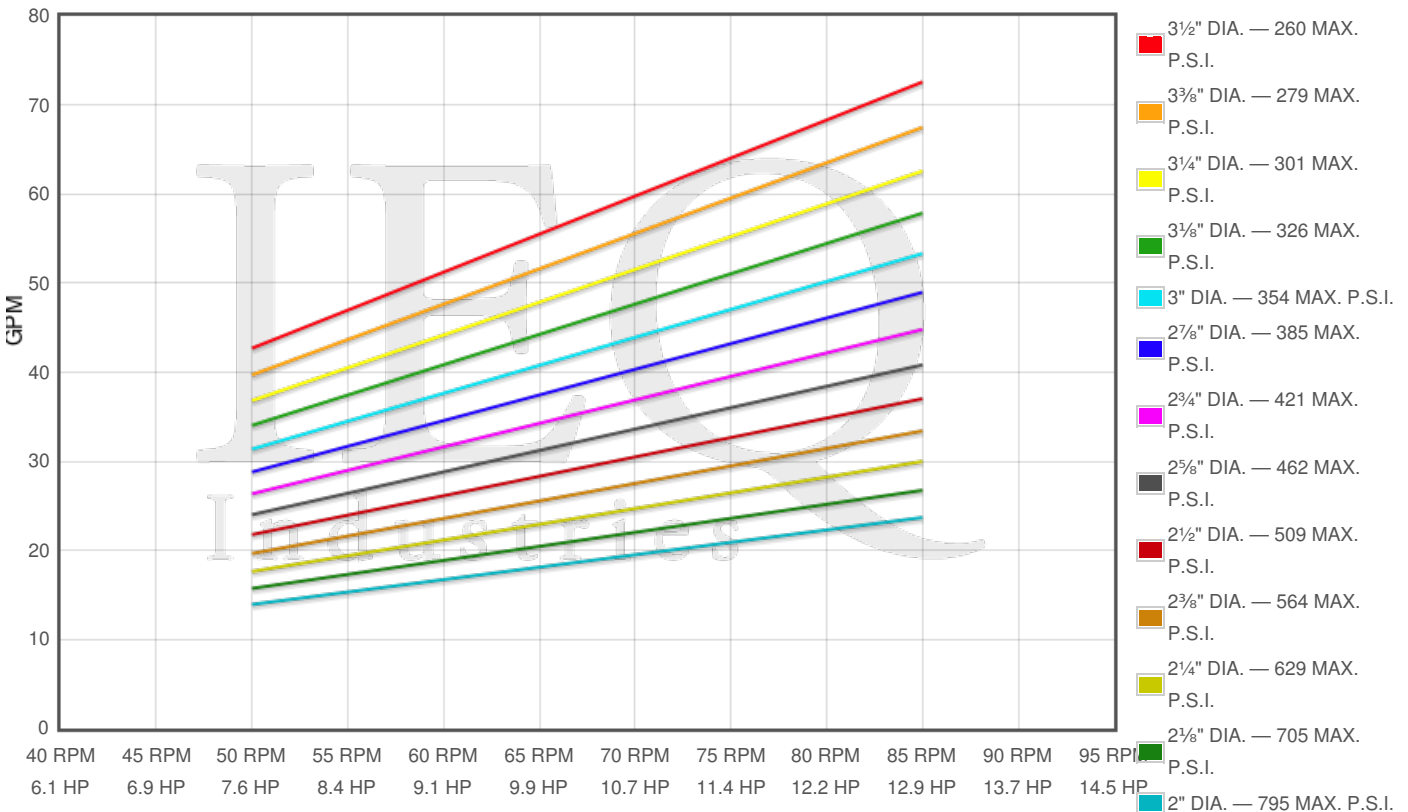
### Specs

Spec	U.S. Standard
Type:	duplex
Minimum Piston Diameter:	2"
Maximum Piston Diameter:	3½"
Stroke length:	5½"
Maximum Working Pressure:	795 PSI
Rod/Piston Load:	2500lb
Gallons per Minute:	69.6
Barrels per Day:	2386
Brake Horse Power:	12.4



### Pump Curves

Hover over Power Curves to reveal RPM and GPM



### Performance Data Table

Pump	English Units					50 RPM		60 RPM		70 RPM		80 RPM		85 RPM	
	Plunger Dia. In.	Plunger Area Sq. In.	BPD per RPM	GPM per RPM	Max Press. PSI	BPD	GPM	BPD	GPM	BPD	GPM	BPD	GPM	BPD	GPM
535	3.500	9.6211	29.274	0.8538	260	1464	43	1756	51	2049	60	2342	68	2488	73
	3.250	8.2958	25.241	0.7362	301	1262	37	1515	44	1767	52	2019	59	2146	63
	3.000	7.0686	21.507	0.6273	354	1075	31	1290	38	1506	44	1721	50	1828	53
	2.750	5.9396	18.072	0.5271	421	904	26	1084	32	1265	37	1446	42	1536	45
	2.500	4.9087	14.936	0.4356	509	747	22	896	26	1046	30	1195	35	1270	37
	2.250	3.9761	12.098	0.3529	629	605	18	726	21	847	25	968	28	1028	30
	2.000	3.1416	9.559	0.2788	795	478	14	574	17	669	20	765	22	813	24

### Features/Benefits

#### Power End Features

- Cast iron power frame
- Ductile iron crankshaft
- Heavy-duty roller crankshaft bearings
- Bi-metal crankpin bearings
- Ductile iron connecting rods
- Alloy steel crosshead pins
- Bronze bearing crosshead pin bushings
- Internal gear reduction / 4.933:1 Ratio / with:
  - Ductile iron herringbone type main gear
  - Alloy steel pinion shaft with herringbone pinion gear
  - Heavy-duty roller pinion shaft bearings
- Flooded sump, splash distribution lubrication
- Rated rod load is 2500 lbs
- Cast iron crossheads with upper/lower oil grooves

#### Fluid End Features

- Bolted Valve and Cylinder Head Covers
- Bolted type glands and removable stuffing boxes
- File Hard Steel Piston Rods
- Valve Types
  - Steel wing guided valve & seat-Crude Oil Transfer
  - Steel wing guided w/replaceable insert for slush service
- Piston Types for crude oil transfer:
  - Cast iron piston body, ring type
  - Cast iron, chrome faced, piston rings
- For slush / mud service:
  - Mission slush type piston w/ replaceable rubbers
- General service piston rod packing

#### Disclaimer I

---

This website is intended as a reference tool only. It has been constructed from published data that is based on manufacturer's sales and engineering documents that are either current, historical and obsolete. Much of the machinery data contained herein has been re-rated through the years with different engineering criteria which maybe in conflict with legacy data. Much of the content published here is calculated online with the use of dynamic data using formulas and extrapolations considered to be sound engineering formulas and are correct to the degree that the data used is accurate. We have done our best to be as precise as as possible in this posting but do not represent any of the calculations or performance data to be entirely accurate. The data published here is intended to be general information rather than actual and to serve as a reference rather than a technical absolute. The user of such data should confirm such information independently.

---

#### Copyright and Disclaimers

WheatleyGas.com is your resource for Gaso pumps, Gaso pump parts and a supplier of ORIGINAL GASO PARTS and equipment, new used and remanufactured Wheatley, GASO and Wheatley/GASO plunger and piston pumps and pump parts and is not affiliated with Wheatley/GASO Inc. or its parent company, National Oilwell Varco, p Copyright ©2017, IntelIQ Holdings, LLC. All rights reserved, \*Used under license from IntelIQ Holdings, LLC.